

CERTIFICATE OF LOCATION OF GOVERNMENT CORNER

NORTHEAST Corner of Section 26, Township 106, Range 39, 5TH P.M.

STATE OF MINNESOTA, County of MURRAY

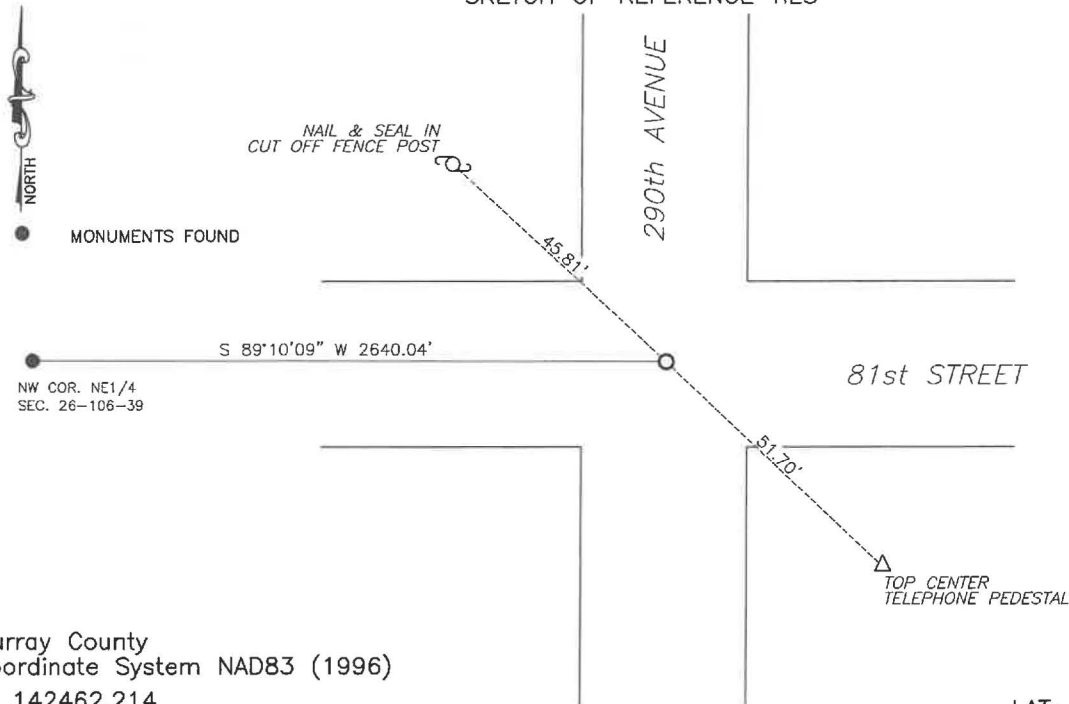
At the corner location shown on the sketch:

☒ On 8/13/2024 found a large field stone with whiskey bottle on top.
DATE

☒ left monument as found, ☐ lowered monument, ☐ removed monument (explain)

☒ On 1/29/2025 placed a 5/8" iron with seal #43844 over top of stone
DATE

SKETCH OF REFERENCE TIES



Murray County
Coordinate System NAD83 (1996)

N: 142462.214
E: 574826.987

WGS84

LAT: 43°57'51.0343"
LON: -95°28'56.9983"

Statement of evidence relative to this corner location is on back of page.

I hereby certify that this document and the data contained herein was prepared by me or under my direct supervision.

Daniel L. Buettel
License No. 43844

3/13/2025
DATE

MAR 13 2025

MURRAY COUNTY RECORDER

Statement of Evidence

NORTHEAST CORNER SECTION 26, T106N, R39W OF THE 5th P.M.

In September 1858 W.J. Neely surveyed the east township line.

In July of 1861 J.W. Myers surveyed the north, south, and west township lines.

In August of 1861 Wellman & Smoot subdivided the township.

A survey by J.W. Woolstencroft dated July 19, 1898 notes a stone in grade at the corner.

On August 13, 2024 Buelte-Moseng Land Surveying dug with a backhoe in the center of the intersection. Found a large 12" field stone with an old glass whiskey bottle on end on top of the stone. Accepted the stone and placed a $\frac{5}{8}$ " iron along the south side of the stone.

Returned on January 29, 2025 and placed a $\frac{5}{8}$ " iron with seal #43844 over top of the stone.